

# Application Guide



## PROTECTAPEEL

APPLY | PROTECT | PEEL | RECYCLE



Return To Us For Recycling

[www.protectapeel.com](http://www.protectapeel.com)

+44(0) 1536 408409

[enquiries@spraylat.co.uk](mailto:enquiries@spraylat.co.uk)

# Before You Begin

- 1. Test Area & Test Peel** - You must always apply the Protectapeel product to a small area to test the substrate's suitability. You must ensure that all substrates are covered. Allow the product to dry for 48 hours, and then check that the Protectapeel product will peel away from each substrate.
- 2. Masking** - Mask all areas that you don't intend to coat in Protectapeel with a suitable tape. Rubber window gaskets can be protected with Petroleum Jelly prior to the application of Protectapeel. Always remove the tape once the Protectapeel product has been applied and is still wet.
- 3. Weather** - Protectapeel products cannot be applied if the temperature is below freezing or in rainfall. If the surface is likely to be exposed to direct rainfall before the Protectapeel product has dried do not apply.
- 4. Protect from Rainfall** - If Protectapeel Original or Super UV is exposed to direct rainfall apply Protectapeel 1090 Top Coat on top of the peelable coating. When used on buildings / windows it is always best to fit gutters to prevent a "water falling" effect on the sides of the building.
- 5. Wet Film Thickness** - Ensure you have a wet film gauge and know what the minimum required wet film thickness (WFT) is of the Protectapeel product before you start to apply. You can find the minimum WFT on the product's Technical Data Sheet.
- 6. Glass Contamination** - If there is a likelihood that the glass is contaminated with Poly Methyl Methacrylate (acrylic) do not use Protectapeel Glasstrip Advanced. Use Protectapeel Original or Protectapeel Super UV instead.

**For more information or guidance  
call on 01536 408409 or  
email [enquiries@spraylat.co.uk](mailto:enquiries@spraylat.co.uk)**

# How To Use A Wet Film Gauge

1. Hold the Wet Film Gauge so that the word “microns” is facing upwards. Place your thumb and finger over the hole. The numbers 150 - 350 should be pointing towards the wet surface.
2. Check the product Technical Data Sheet for the minimum Wet Film Thickness. (WFT)
3. Place the gauge onto the surface at a 90° angle. (Image 1)The coating will cover the two outer guide teeth (Image 2) and the inner measuring teeth.
4. The WFT measurement is read from the inner teeth and is the highest numbered tooth that is coated in the Protectapeel product. If it is below the required minimum WFT then apply another coat and measure again.
5. Check the WFT regularly during application across the coated surface and apply more product if necessary.

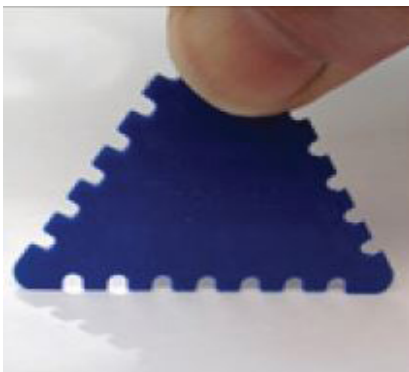


Image 1

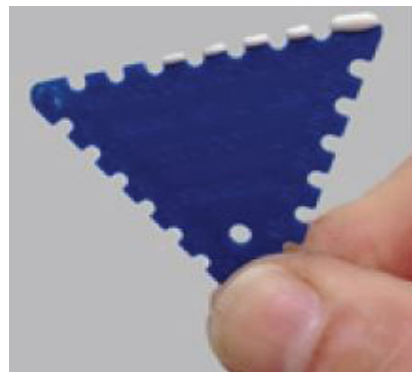


Image 2

**Protectapeel products MUST be applied at a minimum Wet Film Thickness, in accordance to the Technical Data Sheet for the product. Failure to achieve the minimum Wet Film Thickness, WILL result in the Protectapeel coating NOT PEELING off.**

# Application by Spray

## *Stir Product Before Use*

We recommend that you use an airless spray gun with a 17 thou tip size and that you use a shield to protect against overspray on brick work or render.

**1.** You need to purge the spray equipment before you begin application. First place the inlet suction hose into the Protectapeel container and purge the airless spray pump with material. Then purge the airless spray gun and test the spray pattern.



**2.** Point the nozzle at the area you wish to protect and hold the spray gun 300- 400 mm from the substrate. Use the Protectapeel shield to prevent overspray.

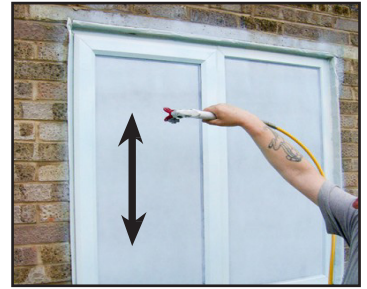


**3.** Release the safety catch and start spraying in a horizontal direction. Keep the gun at right angles to the surface. This means moving your entire arm back and forth rather than flexing the wrist.

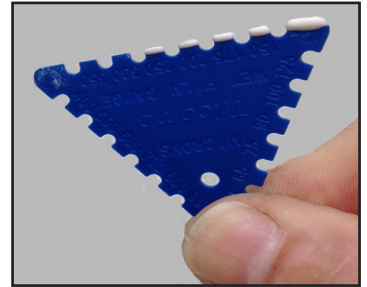
**4.** Release the trigger at the end of each stroke. Then depress the trigger and overlap the previous pass by about 50%. Continue in this fashion for consistent coverage working down the substrate.



**5.** When the surface is fully covered repeat with the spray gun in a vertical direction in the same manner. Care should be taken to ensure that corners and upstands are coated thoroughly, if the coating is too thin in these areas it may become difficult to peel.



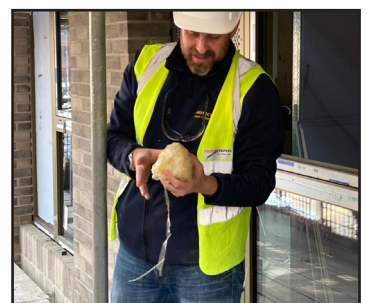
**6.** Use a wet film gauge to check the coatings wet film thickness; make sure this is the same minimum WFT as stated in the product's Technical data sheet (TDS).



**7.** Once spraying is complete clean the gun using cold water. Failure to clean the gun will result in serious problems such as blockages.



**8.** When required Protectapeel is removed by hand peeling. Check the product's TDS for removal time guidelines. The coating can be condensed into a small ball and returned to Spraylat International for recycling in its original tub or disposed of as



# 1090 Top Coat Application Guide

**1090 Top Coat is designed to improve the waterproofing properties of our peelable coatings. It is NOT a peelable coating and should only be applied on top of a peelable coating**

## Application

Peelable coatings and 1090 can be applied by airless spray or roller. If you are using airless spray 1090 can be applied once the peelable coating has tacked off. If you are applying 1090 by roller you should first allow the peelable coating to dry.

1. Apply the peelable coating by airless spray or roller at a minimum wet film thickness as per the TDS (see how to use a wet film gauge).  
Note: Although white in a liquid state, 1090 Top Coat will dry to form a clear coating.
2. If 1090 is applied by airless spray wait for the coating to tack off before applying 1090 at a wet film thickness of 150 Microns.
3. When applying 1090 by roller allow the peelable coating to dry and then apply a coat thickness of 150 Microns wet film thickness

**For more information or guidance  
call on 01536 408409 or  
email [enquiries@spraylat.co.uk](mailto:enquiries@spraylat.co.uk)**